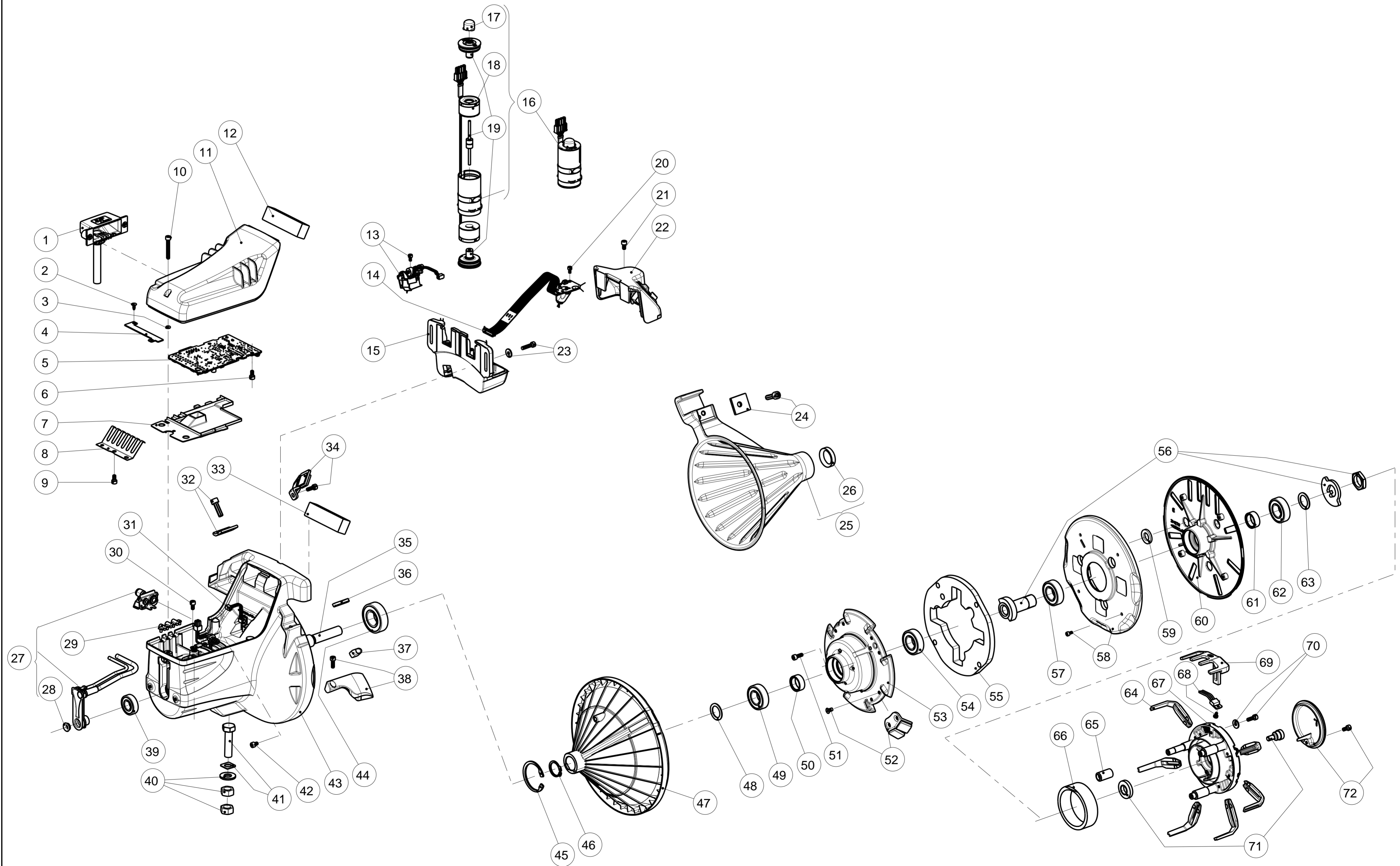



# WD X-Exploded view



PAGE 1 (2)	Spare parts list for Iro IWF WDXF.34.X.	REF. NO. 31-897A-0201-04/1624	
---------------	---	----------------------------------	--

POS	PART NO	DESCRIPTION	REMARKS
1	27.0676.1200	CABLE 1,2 m	
2	900.9390	PLASTIC PLUG	
3	900.9355	O-RING	
4	31.1290	GAP PAD	
5	31.9130.200	CIRCUIT BOARD	
6	900.0117	SCREW	
7	31.1291	PROTECTION COVER	
8	31.1253	COOLING PLATE	
9	900.0117	SCREW	
10	900.0447	SCREW	
11	31.1256.2037	CIRCUIT BOARD COVER COMPL.	
12	31.1293	SEAL	
13	31.1378	YARN RESERVE SENSOR INCL. SCREW	
14	31.1068	WINDING SENSOR	
15	31.1390.001	STOPPER HOUSING 2231 X2	<b>Applicable with cover compl. 31.1046 (pos.22), valid up to feeder S/N 13371405</b>
	31.1390.002	STOPPER HOUSING 2231 X2	<b>Applicable with cover compl. 31.1355 (pos.22), valid from feeder S/N 13371405</b>
16	31.0964.005	STOPPER MAGNET COMPL.	
17	31.1096	COVER	
18	31.1038.001	COILS	
19	31.1393.002	STOPPER PIN INCL. GABELS (2 pcs)	
20	900.0087	SCREW	
21	900.0117	SCREW	
22	31.1046	COVER	<b>Valid up to feeder S/N 13371405</b>
	31.1355	COVER	<b>Applicable with stopper housing 31.1390.002 (pos.15), valid from feeder S/N 13371405</b>
23	31.1385	SCREW INCL. WASHER	
24	31.1370	CLAMP KIT FOR CONE	
25	31.1221	BALLOON CONE	
26	900.6144	EYELET	
27	31.1371	VALVE INCL. AIR CONNECTOR	
28	900.6101	EYELET	
29	31.1294	PLUG, MOTOR HOUSING	
30	900.0117	SCREW	
31	31.1312	HALL SENSOR	
32	31.1370	CLAMP KIT FOR CONE	
33	31.1293	SEAL	
34	31.1379	MAGNET HOLDER COMPLETE INCL. SCREW	
35	31.1295	ROTOR	
36	900.9314	KEY	
37	900.6165	EYELET	
38	31.1377	YARN GUIDE COMPLETE INCL. SCREW	
39	900.4061	BEARING	
40	31.1376	NUT AND WASHER KIT	
41	31.1369	SCREW INCL. WASHER	
42	900.0179	SCREW	
43	31.1308.0017	MOTOR COMPL.	
44	900.4064	BEARING	
45	900.9014	CIRCLIP	
46	900.9017	CIRCLIP	
47	31.1285	WINDING DISC COMPL.	
48	900.2071	WASHER	

<b>POS</b>	<b>PART NO</b>	<b>DESCRIPTION</b>	<b>REMARKS</b>
49	900.4063	BEARING	
50	31.1257	SPACER	
51	900.0218	SCREW	
52	31.1384	MAGNET HOLDER COMPLETE INCL. SCREW	
53	31.1273	MAGNET RING COMPL.	
54	900.4063	BEARING	
55	31.1289	SEAL, MAGNET RING	
56	31.1372	INCLINED HUB, ASSEMBLY KIT	
57	900.4063	BEARING	
58	31.1391	DISC COVER INCL. SCREWS	
59	31.0904	GROMMET	
60	31.1280	OSCILLATING DISC COMPL.	
61	31.1257	SPACER	
62	900.4063	BEARING	
63	900.2071	WASHER	
64	31.0893	FINGER	
65	31.0463	SLEEVE	
66	31.1300	SEAL, SPOOLBODY	
67	31.1275	SPOOL BODY HUB	
68	31.1386	BRUSH INCL. SCREW	
69	31.0402.001	MAGNET FINGER COMPL.	
70	31.1383	SCREW INCL. WASHER	
71	31.1381	WASHER PACKAGE AND SCREW	
72	31.1368	FRONT COVER INCL. SCREW	