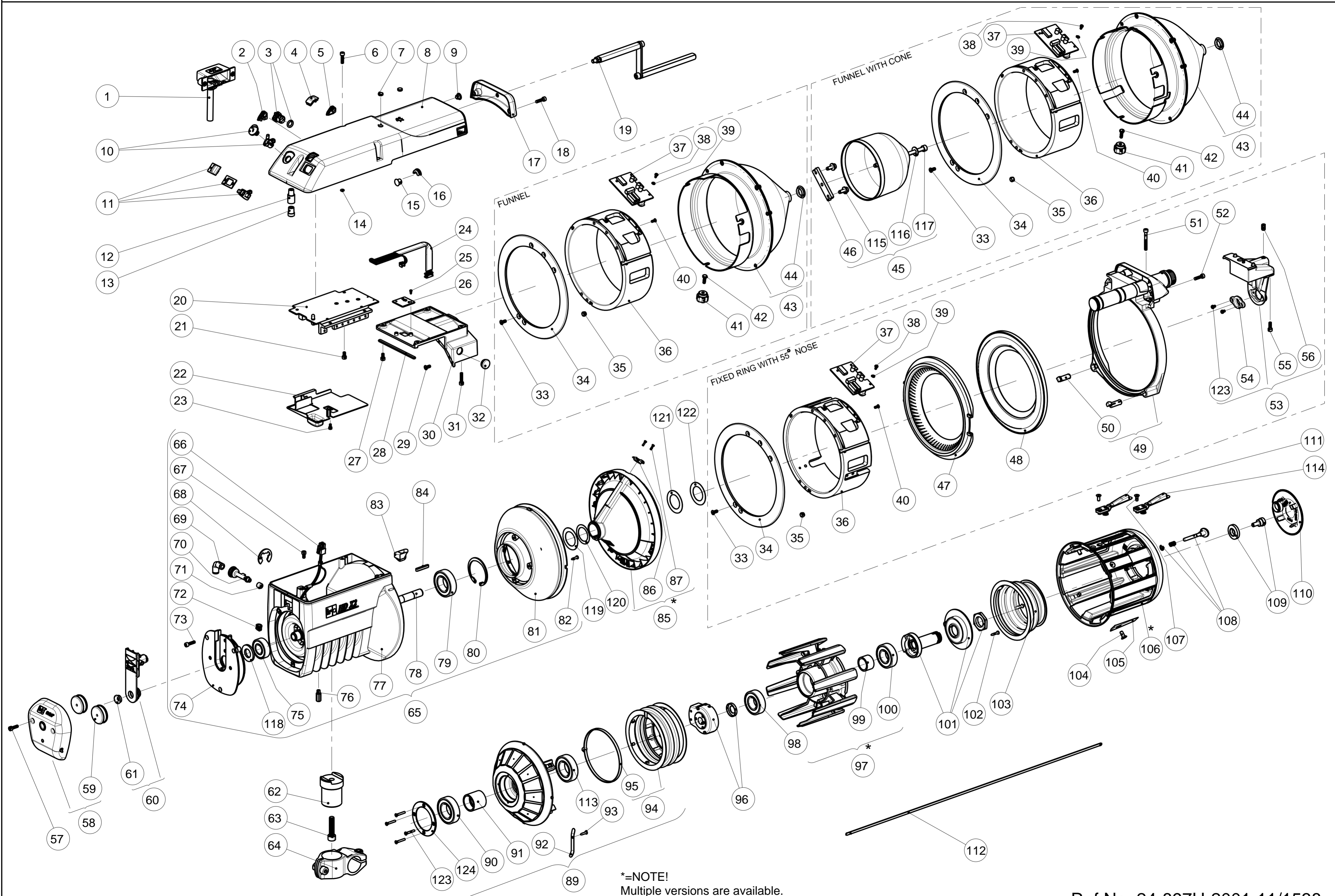


HD X2-Exploded view



*=NOTE!
 Multiple versions are available.
 If uncertain which version needed please contact ROJ/IRO service.



Parts specific only to certain models are identified with ☐ in the centre column.

This spare part list is valid from feeder serial number 14271035

POS	PART NO	DESCRIPTION	Marked with ☐ if the item is specific for:			REMARKS/APPLICATION
			FIXED RING with NOSE 55°	FUNNEL WITH CONE	FUNNEL	
1	27.0923.1750	CABLE WITH METAL COVER				1,75 m
2	27.0738	GROMMET				
3	27.0724.001	SWITCH S/Z COMPL.				
4	24.0069	INDICATOR COVER				
5	27.0739	SEAL				
6	900.0187	SCREW				
7	24.0415	PLUG				
8	24.0325.140L	TOP COVER COMPL.				Including Pos, 3, 4, 6, 10, 11, 12, 13, 14
9	900.9434	PLUG				
10	24.0743	SWITCH, MAX SPEED, ASSEMBLY KIT				
11	24.0744	SWITCH, ON/OFF, ASSEMBLY KIT				
12	24.0114	CONNECTOR				
13	24.0123	SEAL				
14	900.9355	O-RING				
15	900.9375	PLUG				
16	900.5531	SEAL				
17	24.0443	FRONT				
18	900.0187	SCREW				
19	24.0537	KIT FOR OUTPUT TENSIONER			☐	
20	09E00442R	PCB, MOTOR				
21	900.0117	SCREW				
22	24.0510	PROTECTION COVER				
23	900.0426	SCREW				
24	05R01006	SENSOR CABLE				
25	900.0223	SCREW				
26	50H00590	PCB HALLSENSOR				
27	900.0117	SCREW				
28	42B00024	SEAL				
29	900.0575	SCREW				
30	24.0540	SENSOR RING HOLDER				
31	900.0260	SCREW				
32	900.5531	PLUG				
33	900.0575	SCREW			☐	
34	28E00873	BALLOON BREAKER RING			☐	
35	900.1024	LOCKING NUT			☐	
36	32P00073	SENSOR RING			☐	
37	09E00415R	PCB SENSOR			☐	
38	900.0317	SCREW			☐	
39	900.2164	WASHER			☐	
40	900.0579	SCREW			☐	
41	24.0527	NUT FOR FUNNEL			☐	
42	900.0577	SCREW			☐	
43	24.0581.001	FUNNEL COMPL.			☐	Including Pos. 41,42
44	27.0479.002	EYELET			☐	
45	54R00435	ANTI-LOOP KIT		☐		
46	28E01094	INNER PLATE		☐		
47	54T00801	BRUSH medium, synthetic, Z-rot	☐			
47	54T00802	BRUSH medium, synthetic, S-rot	☐			
47	54T00803	BRUSH stiff, synthetic, Z-rot	☐			
47	54T00804	BRUSH stiff, synthetic, S-rot	☐			



Parts specific only to certain models are identified with □ in the centre column.

This spare part list is valid from feeder serial number 14271035

POS	PART NO	DESCRIPTION	Marked with □ if the item is specific for:			REMARKS/APPLICATION
			FIXED RING with NOSE 55°	FUNNEL WITH CONE	FUNNEL	
48	24.0252.102	E-FLEX 30° medium	□			
48	24.0281.003	E-FLEX 30° stiff	□			
48	24.0281.103	E-FLEX 30° X-stiff	□			
49	24.0290.002L	BRUSH HOLDER	□			
50	27.0490	SNAP-IN CAGE	□			
51	900.0496	SCREW	□			
52	900.0187	SCREW	□			
53	24.0392.000L	NOSE 55°	□			
53	24.0392.001L	NOSE 55° Polished version	□			Glass ROVING application
54	27.0887.001	EYELET	□			
54	27.0887.002	EYELET Polished version	□			Glass ROVING application
55	900.0218	SCREW	□			
56	900.0495	SCREW	□			
57	900.0077	SCREW				
58	54R00336R	YARN BREAK SENSOR				
58	54R00339R	YARN BREAK SENSOR polished version				Glass ROVING application
59	27A00029	DAMPER WASHER FOR YARN BREAK SENSOR				
60	24.0026.111	VALVE COMPL.				
60	24.0026.110	VALVE COMPL. polished version				Glass ROVING application
61	24.0491.002	EYELET				
61	24.0491.001	EYELET Polished version				Glass ROVING application
62	24.0039.002	MOUNT SPIGOT				
63	900.0346	SCREW				
64	54M00065	MOUNT				
65	24.0395.007K	MOTOR COMPL.				
66	24.0435	STATOR				
67	900.0117	SCREW				
68	900.9364	CIRCLIP				
69	900.9296	AIR CONNECTOR				
70	24.0027	AIR TUBE				
71	24.0173	GROMMET				
72	24.0371	GROMMET				
73	900.0187	SCREW				
74	24.0021.000K	MOTOR FLANGE				
75	900.4069	BEARING				
76	900.0529	SCREW				
77	24.0004.004K	MOTOR HOUSE				
78	24.0365.004	ROTOR				
79	900.4067	BEARING				
80	900.9099	CIRCLIP				
81	24.0025.002	MAGNET RING				
82	900.0478	SCREW				
83	24.0519.002	EYELET				
83	26A00175	EYELET Polished version				Glass ROVING application
84	900.9314	KEY				
85	24.0384.201	WINDING DISC COMPL.				
85	24.0384.202	WINDING DISC COMPL. Polished				Glass ROVING application
86	24.0669.001	EYELET				
86	24.0669.002	EYELET Polished				Glass ROVING application
87	900.0588	SCREW				



Parts specific only to certain models are identified with ☐ in the centre column.

This spare part list is valid from feeder serial number 14271035

POS	PART NO	DESCRIPTION	Marked with ☐ if the item is specific for:			REMARKS/APPLICATION
			FIXED RING with NOSE 55°	FUNNEL WITH CONE	FUNNEL	
89	24.0287.004	MAGNET RING COMPL.				
90	900.4067	BEARING				
91	24.0058	DISTANCE				
92	24.0124	GROUND STRIP				
93	900.0479	SCREW				
94	24.0573.002	BELLOW COMPL.				
95	900.5937	CABLE TIE				
96	24.0725	COUNTERWEIGHT WITH WASHER				
97	24.0141.004	TUMBLE CYLINDER XL Compl.				Standard for all PP and ROVING application
97	24.0141.005	TUMBLE CYLINDER XL Compl. Plasma coated				Heavy JUTE application
97	24.0141.006	TUMBLE CYLINDER XL Compl.				One way bearing, Chromed
97	24.0141.007	TUMBLE CYLINDER XL Compl.				One way bearing, Plasma
97	24.0141.008	TUMBLE CYLINDER XL Compl.				Sand blasted, Chromed
98	900.4068	BEARING				
98	900.4031	BEARING, ONE WAY				
99	24.0059	SPACER				
99	24.0257	SPACER For One way bearing				
100	900.4068	BEARING				
101	24.0724.003	INCLINED HUB ASSEMBLY KIT				3 MARKING DOTS ON HUB
101	24.0724.005	INCLINED HUB 2,2° ASSEMBLY KIT				5 MARKING DOTS ON HUB
102	900.0303	SCREW				
103	24.0242	BELLOW				
104	900.0120	SCREW				
105	24.0695	RELAXING RAMP				
106	24.0438.001	SPOOL BODY	☐		☐	Standard for ALL PP application
106	24.0438.003	SPOOL BODY, Roving	☐		☐	Glass ROVING
106	24.0320.003	SPOOL BODY Plasma coated	☐		☐	Heavy JUTE application
106	24.0438.014	SPOOL BODY FOR CONE		☐		Modified to fix the CONE
107	900.0459	SCREW				
108	24.0723	S/Z BUTTON ASSEMBLY KIT				
109	24.0722	SCREW WITH WASHER				
110	27.0160	COVER				
111	24.0530	MINIMUM SENSOR FINGER				
112	24.0174	THREADING NEEDLE				
113	900.4065	BEARING				
114	24.0530	MAXIMUM SENSOR FINGER				
114	24.0530.001	MAXIMUM SENSOR FINGER			☐	Only PP Single Insertion application
115	21P00049	SCREW		☐		
116	22A00036	WASHER		☐		
117	21N00069	SCREW		☐		
118	24.0795	SEAL FILT				
119	24.0791	SEAL PAPER SMALL				
120	24.0792	BRASS WASHER				
121	24.0794	SEAL PLASTIC				
122	24.0793	SEAL PAPER BIG				
123	900.0603	SCREW				